



Reliability  
Simplicity  
Minimal Maintenance  
Decreased Downtime  
Seamless Integration  
Fully Customizable

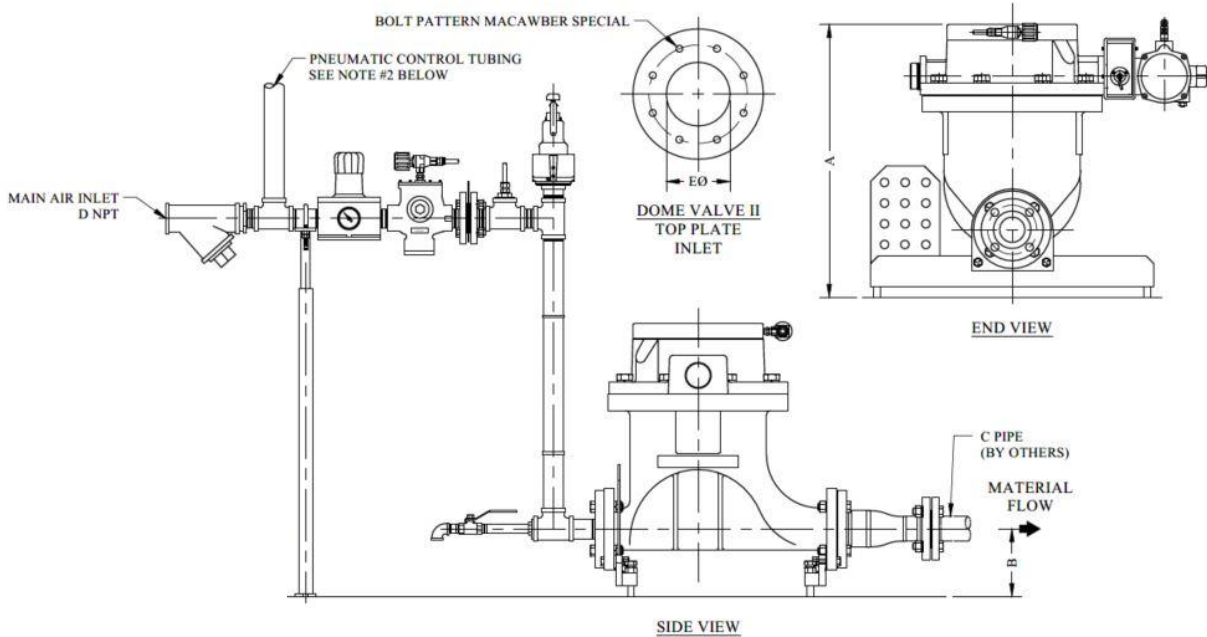
The Ashveyor® is an effective, low-cost system for the transfer of ash or dust either as a single unit or in series under a line of feed hoppers from Electrostatic Precipitators (ESP) or baghouses. Its low profile makes it an excellent solution where space is limited as well as for retrofitting existing applications. It uses less energy than any other solution of multi-pickup point handling and with only one moving parts, it is easy to maintain. The operating process is simple; each conveying cycle is designed to remove the material from all feed points on the row. This method ensures a normally empty hopper which is essential for correct operation of the gas cleaning process. The Ashveyor® uses Macawber proprietary Dome Valve® as its feeding valve, designed for robust, abrasive, and high temperature applications. Continuously developed since 1974, our Ashveyor® has conveyed every combustion type ash and dust in the market.

- Specifically designed for power generation processes and dust handling
- Example ash materials: Biomass, EAF dust, Cupola dust, fly ash, bottom ash, coal, sewage sludge ash, municipal waste, medical waste and more
- Standard temperature rating up to 650°F
- Pressure rating up to 100psig (7barg)
- Standard material A278 cast iron
- Available in 304/316 stainless steel
- Industrial coatings such as Teflon®, tungsten carbide, nickel, and others
- Elastomer options neoprene, silicone, Viton, and others available upon request
- Not required: vent valve, discharge valve, air inlet valve, or level probe
- Fully assembled and tested prior to shipment
- Manufactured in Maryville, TN USA
- Global customer support for service and spare parts
- ISO 9001:2015 Quality Assured

UK – Mactenn Systems, Ltd.

India – Macawber Engineering Systems India, Ltd. Pvt.

China – Macawber China



MODEL	DIMENSIONS (INCH)					NET WT (LBS)
	A	B	C	D	E	
0.75/6-2	26 3/16"	6 1/2"	2"	2" NPT	6 3/16"	509
1.5/8-4	31 1/4"	7"	4"	2" NPT	8"	698
3.0/8-5	37 1/2"	9 3/16"	4"	2" NPT	7 7/8"	1445
5.0/8-6	43"	9 3/4"	5"	2" NPT	11 13/16"	2400
10.0/12-8	53"	9"	8"	3" NPT	12"	3769
15.0/12-10	57"	10 5/8"	10"	34"	12"	4163

**INFORMATION NOT CERTIFIED FOR INSTALLATION PURPOSES**

UK – Mactenn Systems, Ltd.  
 India – Macawber Engineering Systems India, Ltd. Pvt.  
 China – Macawber China