



- Cost Effective
- Minimized Maintenance
- Decreased Downtime
- Seamless Integration
- Fully Customizable

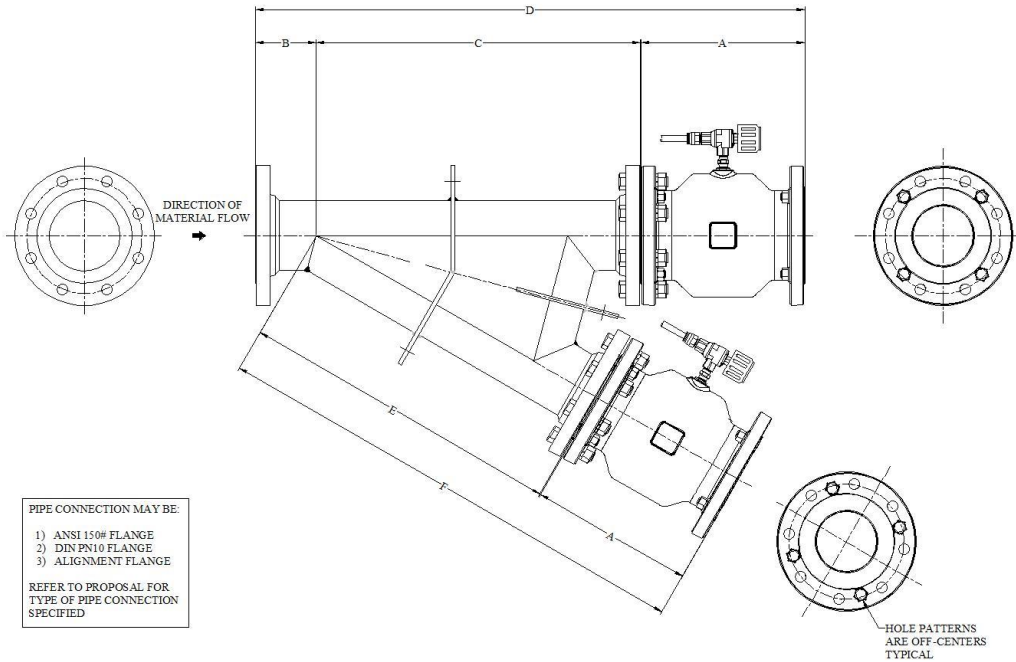
The Pinch Type Switch Valve is used as a diversion or conversion mechanism in the convey transfer process. It is self-supporting in the conveying line and unless otherwise stated, should be positioned in the vertical rise of the pipe route. The valve is controlled from pneumatically operated solenoids that energizes inflatable bladders for a two-branch application directing material to multiple reception points. The pinch valve is supplied with a heavy-duty abrasion resistant neoprene sleeve and rated for a maximum conveying line pressure of 4barg. For food grade applications, the elastomer is FDA approved. The PV Switch Valve is constructed from heavy plate material and the design allows reliable performance for handling large tonnages of abrasive materials. The valve can be controlled automatically by the dense phase system's PLC or communicate to another PLC with remote I/O.

- Temperature rating up to < 400°F (204°C)
- Pressure rating up to 57psig (4barg)
- Standard material 516 Gd70 carbon steel
- Available in 304/316 stainless steel, aluminum, galvanized, and others
- Food grade, FDA, and pharmaceutical finishes and coatings
- Industrial coatings such as Teflon®, tungsten carbide, nickel, and others
- Fully assembled and tested prior to shipment
- Global customer support for service and spare parts
- Manufactured in Maryville, TN USA
- ISO 9001:2015 Quality Assured

UK – Mactenn Systems, Ltd.

India – Macawber Engineering Systems India, Ltd. Pvt.

China – Macawber China



| MODEL<br>(PIPE SIZE) | DIMENSIONS (INCH) |          |           |           |           |           | NET WT<br>(LBS) |
|----------------------|-------------------|----------|-----------|-----------|-----------|-----------|-----------------|
|                      | A                 | B        | C         | D         | E         | F         |                 |
| 2"                   | 7 3/16"           | 4 1/16"  | 18 7/8"   | 30 3/16"  | 18 7/8"   | 26 1/8"   | 105             |
| 3"                   | 8 15/16"          | 5 1/8"   | 19 11/16" | 33 13/16" | 19 11/16" | 28 11/16" | 117             |
| 4"                   | 10 9/16"          | 3 15/16" | 20 7/8"   | 35 7/16"  | 20 13/16" | 31 7/16"  | 123             |
| 5"                   | 13 3/4"           | 5 15/16" | 22 7/16"  | 42 3/16"  | 22 7/16"  | 36 1/4"   | 194             |
| 6"                   | 16 7/16"          | 5 15/16" | 25 9/16"  | 48"       | 25 5/8"   | 42 1/8"   | 344             |

**INFORMATION NOT CERTIFIED FOR INSTALLATION PURPOSES**

UK – Mactenn Systems, Ltd.  
 India – Macawber Engineering Systems India, Ltd. Pvt.  
 China – Macawber China